

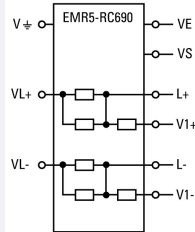


Insulation monitoring relay, AC/DC coupling module

Part no. EMR5-RC690
Article no. 153445
Catalog No. EMR5-RC690

Delivery program

Product range			EMR4+EMR5 measuring and monitoring relays
Basic function			Insulation monitoring relays
Contact sequence			Coupling module Expands the rated voltage range for the EMR5-400-2-A to 690 V AC or 1000 V DC no supply voltage required
Rated operating voltage for the supply system being monitored			0 - 690 V AC 0 - 1000 V DC
Width		mm	45



Design verification as per IEC/EN 61439

Technical data for design verification			
Operating ambient temperature min.		°C	-25
Operating ambient temperature max.		°C	65

Technical data ETIM 6.0

Relays (EG000019) / Insulation and earth fault monitoring relay (EC001444)			
Electric engineering, automation, process control engineering / Low-voltage switch technology / Monitoring equipment (low-voltage switch technology) / Insulation-/earth connection monitoring equipment (ecl@ss8.1-27-37-18-07 [AKF101011])			
Type of electric connection			Screw connection
Rated control supply voltage U_s at AC 50HZ		V	0 - 0
Rated control supply voltage U_s at AC 60HZ		V	0 - 0
Rated control supply voltage U_s at DC		V	0 - 0
Voltage type for actuating			AC/DC
With detachable clamps			No
Function			For mixed system
Rated voltage		V	0 - 0
Nominal rated frequency		Hz	0 - 0
Line capacity		μ F	0
Response value impedance 1		kOhm	0 - 0
Response value impedance 2		kOhm	0 - 0
Indication of insulation value			No
Error registration possible			No
Number of contacts as normally closed contact			0
Number of contacts as normally open contact			0
Number of contacts as change-over contact			0
Width		mm	0
Height		mm	78
Depth		mm	100

Approvals

Product Standards			IEC 60255-6; IEC 61557-8; UL 508; CSA-22.2 No. 14-05; CE marking
UL File No.			E29184

UL Category Control No.

NKCR, NKCR7

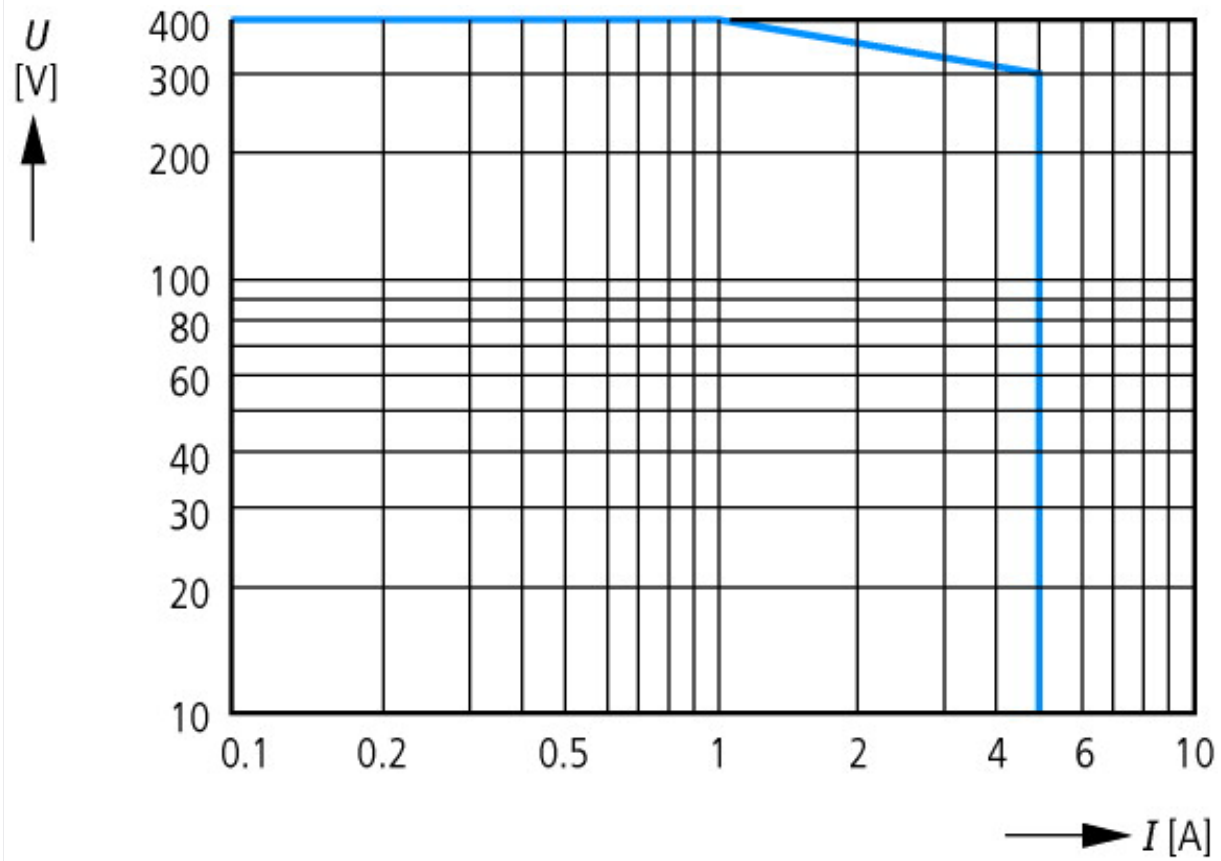
North America Certification

UL listed, CSA certified

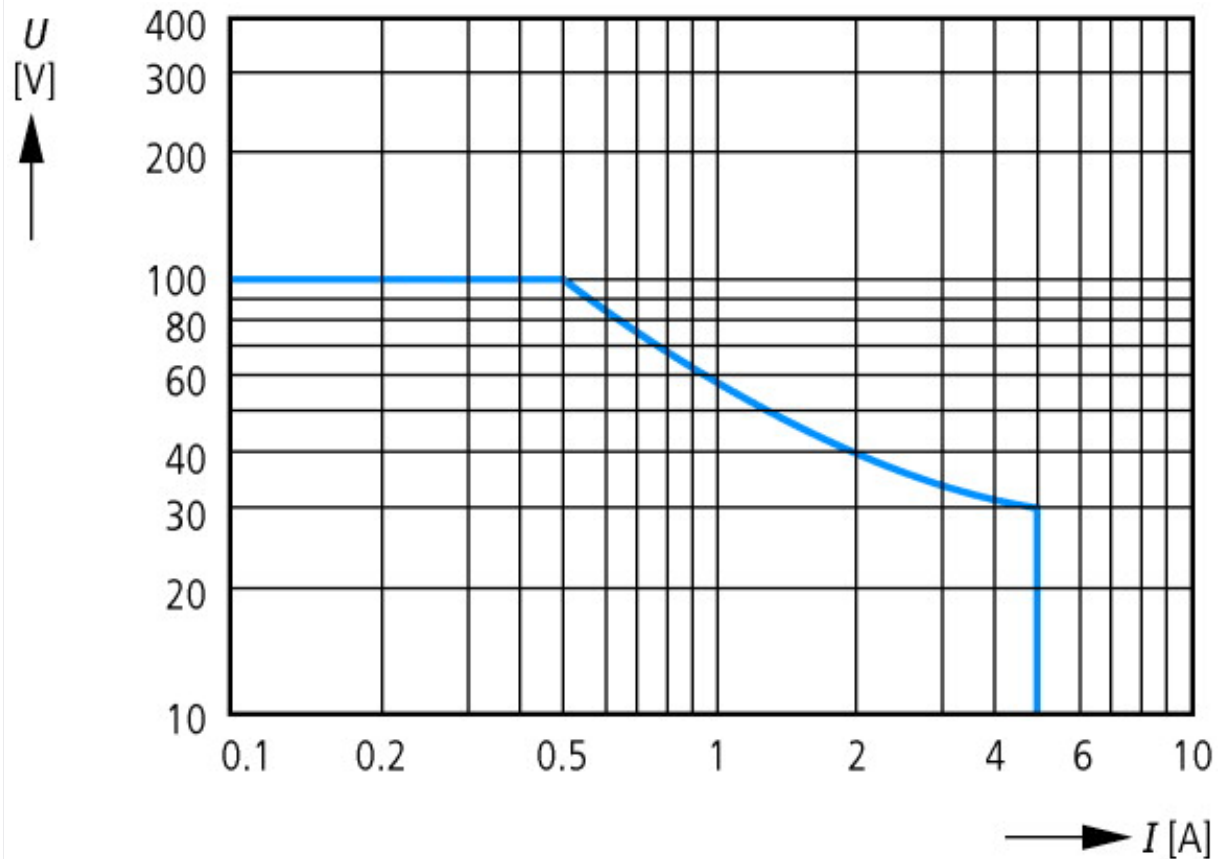
Degree of Protection

IEC: IP20, UL/CSA Type: -

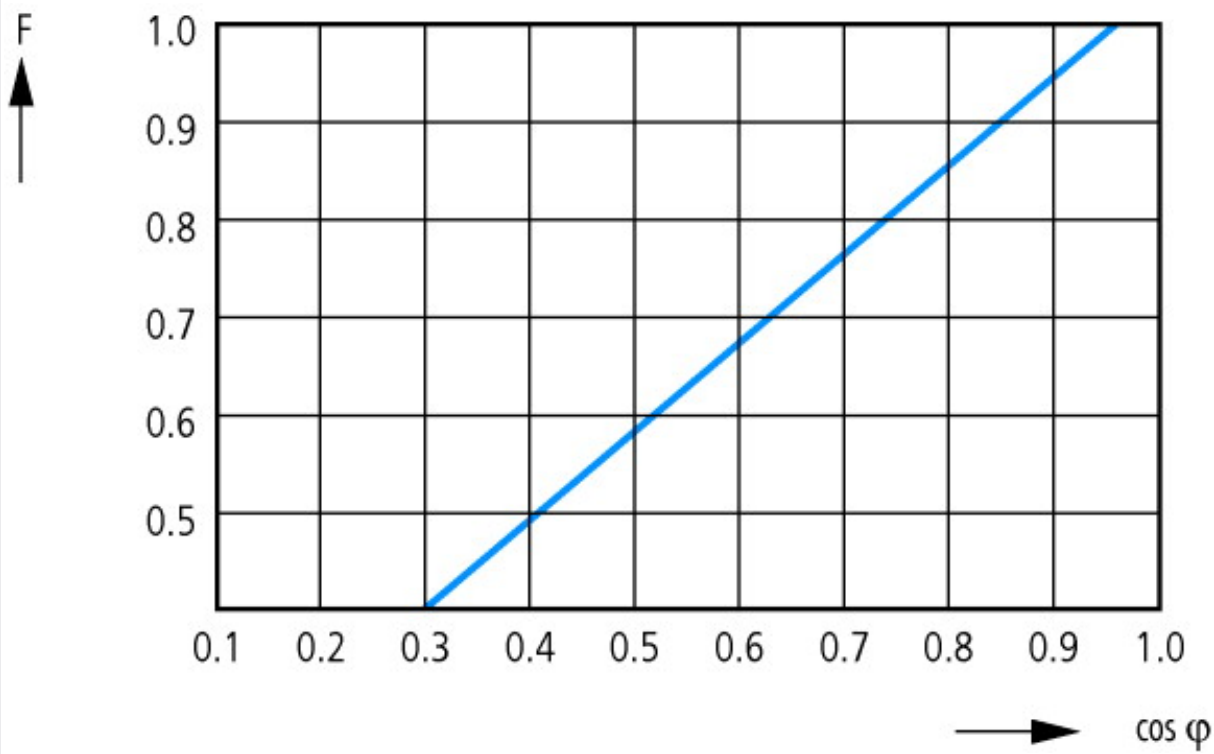
Characteristics



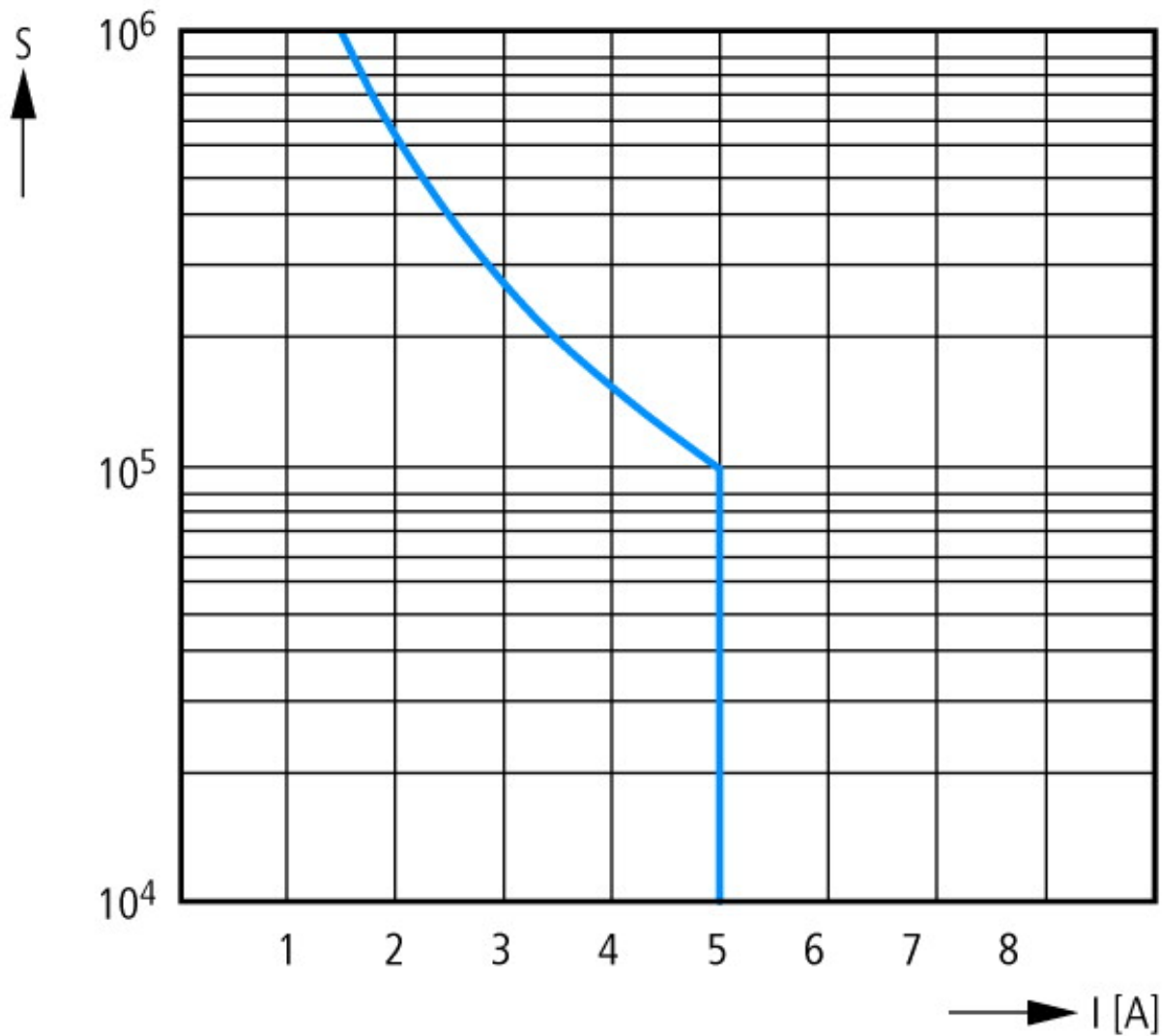
AC load (resistive)



DC load (resistive)

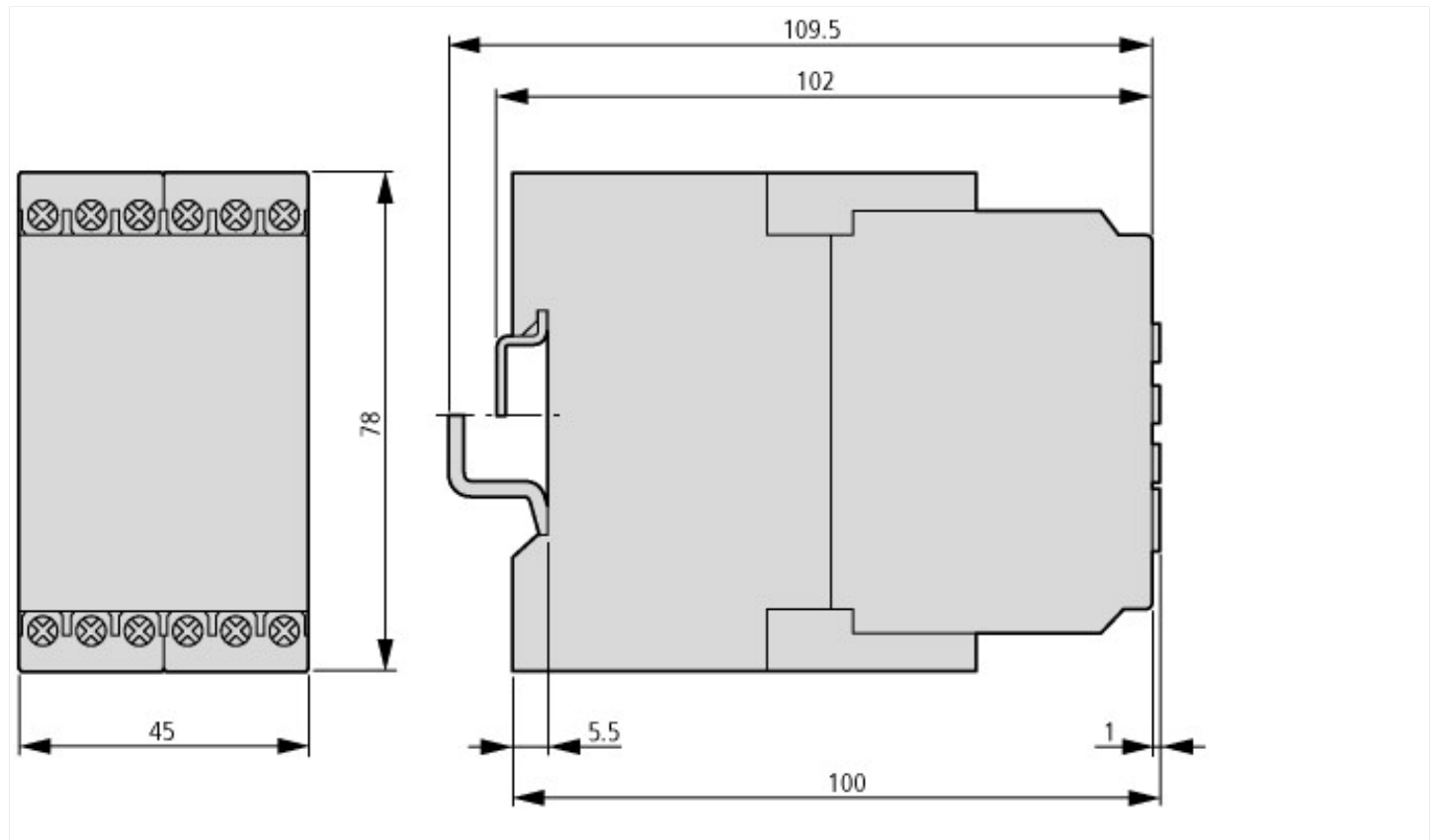


Derating factor F with inductive AC load



Contact life
 S operations
 220 V 50 Hz AC-1
 360 operations/h

Dimensions



Additional product information (links)

IL04912006Z Coupling unit for insulation monitoring relay EMR5-R400-2-A

IL04912006Z Coupling unit for insulation monitoring relay EMR5-R400-2-A

ftp://ftp.moeller.net/DOCUMENTATION/AWA_INSTRUCTIONS/IL04912006Z2016_03.pdf